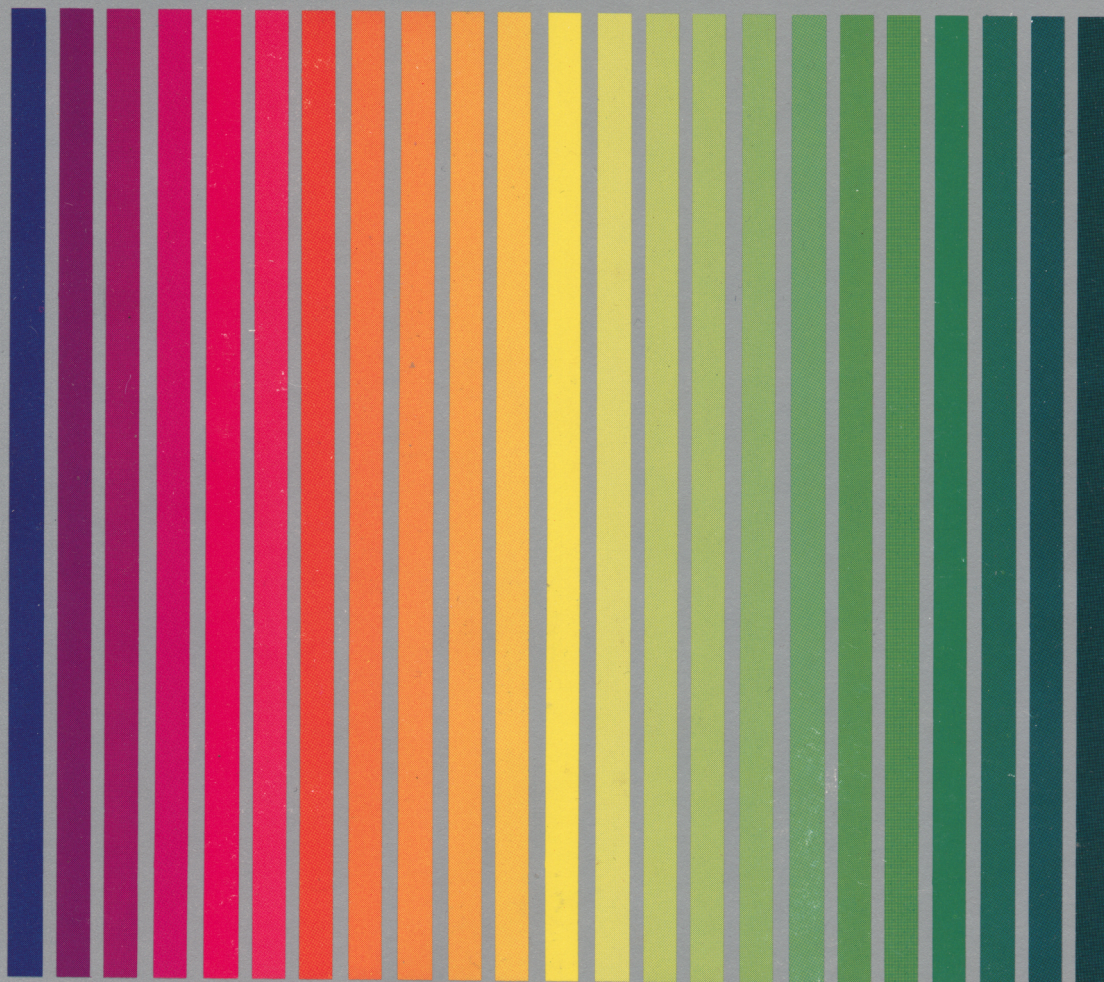


APX ATARI® PROGRAM EXCHANGE



Anthill

Steve Bittrolff

APX-10024 APX-20024

User-Written Software for ATARI Home Computers

Anthill

Steve Bittrolff

APX-10024 APX-20024

ANTHILL

by

Steve Bittrolff

Program and Manual Contents © 1981 Atari, Inc.

Copyright and right to make backup copies. On receipt of this computer program and associated documentation (the software), ATARI grants to you a nonexclusive license to execute the enclosed software and to make backup or archival copies of the computer program for your personal use only, and only on the condition that all copies are conspicuously marked with the same copyright notices as appear on the original. This software is copyrighted. You are prohibited from reproducing, translating, or distributing this software in any unauthorized manner.

TRADEMARKS OF ATARI

The following are trademarks of Atari, Inc.

ATARI®
ATARI 400™ Home Computer
ATARI 800™ Home Computer
ATARI 410™ Program Recorder
ATARI 810™ Disk Drive
ATARI 820™ 40-Column Printer
ATARI 822™ Thermal Printer
ATARI 825™ 80-Column Printer
ATARI 830™ Acoustic Modem
ATARI 850™ Interface Module

Distributed by

The ATARI Program Exchange
P. O. Box 427
155 Moffett Park Drive, B-1
Sunnyvale, CA 94086

To request an APX Software Catalog, write to the address above, or call toll-free:

800/538-1862 (outside California)
800/672-1850 (within California)

Or call our Sales number, 408/745-5535.

INTRODUCTION

GAME OVERVIEW

You and a friend are at the bottom of a subterranean anthill. The air is thinning out rapidly. Enough of this exploring, you say to each other, it's time to split!

You decide to race each other to the top. The first up, wins. But to win, you'll have to combine a sharp eye, quick reflexes, and strategic planning. It's not simply a matter of tracing the quickest path and using your joystick to get yourself up to the top. This anthill happens to be at a construction site, and so paths open and close in the maze as the earth shifts under the weight of the heavy machinery. You could make it up to the last layer only to find yourself trapped on all sides! Then you can wait patiently, hoping a path will reopen soon, or you can admit temporary defeat, push the red button on your joystick to position yourself back at the bottom of the maze, and start off again.

To make matters even worse, a frantic blue ant scurries around the maze trying to keep you both from deserting him. If he zaps you, you're involuntarily thrown back to the bottom and your struggle begins all over again.

Luck will help you a little in ANTHILL, but mostly you must rely on skill!

REQUIRED ACCESSORIES

8K RAM for cassette version
16K RAM for diskette version
ATARI BASIC Language Cartridge
ATARI 410 Program Recorder for cassette
ATARI 810 Disk Drive for diskette
ATARI Joystick Controllers

GETTING STARTED

SETTING UP

1. Plug your joystick controllers into the first and second controller jacks on your computer console.
2. If you have the cassette version of ANTHILL:
 - a. Insert the game cassette in the program recorder, press REWIND, and then press PLAY.
 - b. Type CLOAD and press the RETURN key twice.
 - c. After the game loads into RAM, you'll see the READY prompt. Type RUN and press the RETURN key.

If you have the diskette version of ANTHILL:

- a. Turn on your disk drive and insert the game diskette.
- b. Power up your computer and turn on your video screen.
- c. At the READY prompt, type RUN "D:ANTHILL" and press the RETURN key. If you're using more than one disk drive, remember to follow the device initial (D) with the number of the drive containing ANTHILL (e.g., RUN "D2:ANTHILL" for disk drive two). The game will load into RAM and start.

FIRST DISPLAY SCREEN

Your video screen will contain the scoring display and the copyright notice:

```
          ANTHILL

    BLUE      GREEN
      0         0

PRESS START TO PLAY

COPYRIGHT 1981 ATARI
```

SCORING CHOICES

Before beginning the game, decide whether the winner is the leader after a set number of rounds or whether the winner is the first to earn a set number of points. For example, the winner could be the one with more points at the end of five rounds. Or, the winner could be the first to reach 50 points.

HOW TO START

Position your joystick controller so that the red button is at the upper left-hand side, towards your video screen. Now press the START key to begin playing. The maze will build and change before your very eyes. Don't just stand there...get going!

PLAYING ANTHILL

Move your joystick forwards and backwards, left and right to move your marker in the corresponding direction through the maze toward the top.

You'll see a blue ant flitting around, opening and closing pathways. If this ant lands on you, you'll hear a short beep of gloating victory and find yourself back at the bottom of the maze. (Drat it!)

Sometimes you'll become trapped in the maze, with no open pathways. You can wait it out, if you're lazy. On the other hand, you can push the red button on your joystick controller to bounce yourself back to the bottom of the maze and start over. Sometimes a temporary setback pays off in the end!

The first to break through the top of the maze wins.

HINTS

You never know when a path will open, so constantly scan different parts of the maze.

Try to box your opponent into a corner so that you have the better chance of getting through an opening first.

SCORING

Your score depends on how many levels ahead of your opponent you are when you break through the top. For example, if you're five levels (rows) ahead, you earn five points. The maximum possible score per round is 22 points, for the maze's 22 levels. If you both reach the top simultaneously, neither earns points for that round.

PLAYING MORE ROUNDS AND RESTARTING THE GAME

To play another round with your scores accumulating, press the START key.

To restart the game with the score display reset to zero, first press the the OPTION key to erase the score, and then press the START key to begin playing.

LIMITED WARRANTY ON MEDIA AND HARDWARE ACCESSORIES.

We, Atari, Inc., guarantee to you, the original retail purchaser, that the medium on which the APX program is recorded and any hardware accessories sold by APX are free from defects for thirty days from the date of purchase. Any applicable implied warranties, including warranties of merchantability and fitness for a particular purpose, are also limited to thirty days from the date of purchase. Some states don't allow limitations on a warranty's period, so this limitation might not apply to you. If you discover such a defect within the thirty-day period, call APX for a Return Authorization Number, and then return the product along with proof of purchase date to APX. We will repair or replace the product at our option.

You void this warranty if the APX product: (1) has been misused or shows signs of excessive wear; (2) has been damaged by use with non-ATARI products; or (3) has been serviced or modified by anyone other than an Authorized ATARI Service Center. Incidental and consequential damages are not covered by this warranty or by any implied warranty. Some states don't allow exclusion of incidental or consequential damages, so this exclusion might not apply to you.

DISCLAIMER OF WARRANTY AND LIABILITY ON COMPUTER PROGRAMS.

Most APX programs have been written by people not employed by Atari, Inc. The programs we select for APX offer something of value that we want to make available to ATARI Home Computer owners. To offer these programs to the widest number of people economically, we don't put APX products through rigorous testing. Therefore, APX products are sold "as is", and we do not guarantee them in any way. In particular, we make no warranty, express or implied, including warranties of merchantability and fitness for a particular purpose. We are not liable for any losses or damages of any kind that result from use of an APX product.

ATARI PROGRAM EXCHANGE

REVIEW FORM

We're interested in your experiences with APX programs and documentation, both favorable and unfavorable. Many software authors are willing and eager to improve their programs if they know what users want. And, of course, we want to know about any bugs that slipped by us, so that the software author can fix them. We also want to know whether our documentation is meeting your needs. You are our best source for suggesting improvements! Please help us by taking a moment to fill in this review sheet. Fold the sheet in thirds and seal it so that the address on the bottom of the back becomes the envelope front. Thank you for helping us!

1. Name and APX number of program _____

2. If you have problems using the program, please describe them here.

3. What do you especially like about this program?

4. What do you think the program's weaknesses are?

5. How can the catalog description be more accurate and/or comprehensive?

6. On a scale of 1 to 10, 1 being "poor" and 10 being "excellent", please rate the following aspects of this program?

- _____ Easy to use
- _____ User-oriented (e.g., menus, prompts, clear language)
- _____ Enjoyable
- _____ Self-instructive
- _____ Useful (non-game software)
- _____ Imaginative graphics and sound

7. Describe any technical errors you found in the user instructions (please give page numbers).

8. What did you especially like about the user instructions?

9. What revisions or additions would improve these instructions?

10. On a scale of 1 to 10, 1 representing "poor" and 10 representing "excellent", how would you rate the user instructions and why?

11. Other comments about the software or user instructions:

STAMP

ATARI Program Exchange
Attn: Publications Dept.
P.O. Box 50047
60 E. Plumeria Drive
San Jose, CA 95150

[seal here]